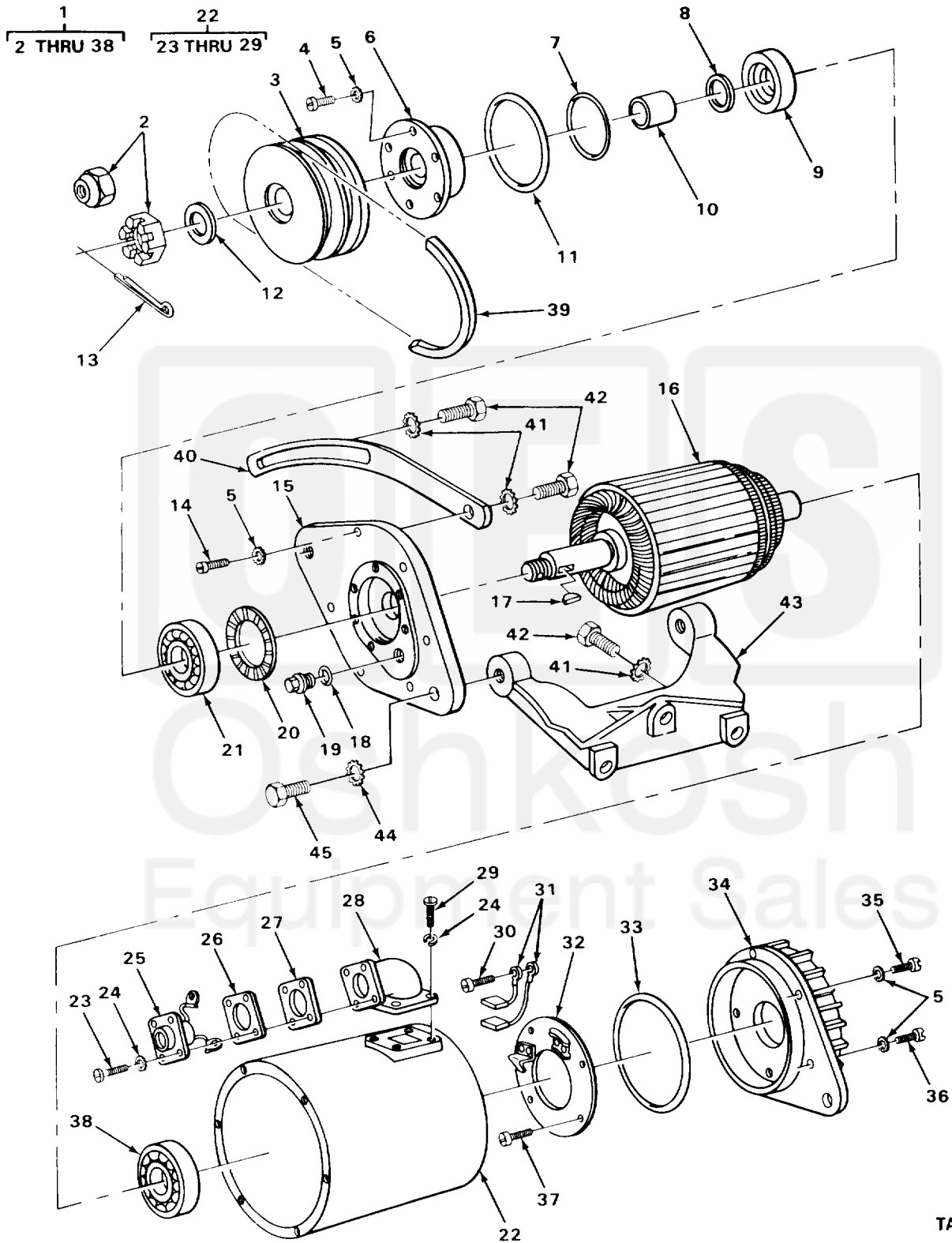


SECTION II

TM 10-3930-242-24P



TA705377

FIGURE 51. GENERATOR AND RELATED PARTS.

(1) ITEM NO	(2) SMR CODE	(3) CAGEC	(4) PART NUMBER	(5) DESCRIPTION AND USABLE ON CODES (UOC)	(6) QTY
GROUP 06 ELECTRICAL SYSTEM					
GROUP 0601 GENERATOR, ALTERNATOR					
FIG. 51 GENERATOR AND RELATED PARTS					
1	PAOFF	19207	10950808	GENERATOR,ENGINE AC	1
2	PAFZZ	96906	MS51922-38	.NUT,SELF-LOCKING,HE MOUNTING	1
2	PFZZ	96906	MS35692-824	UOC:CQK,U72 .NUT,PLAIN,SLOTTED,H PULLEY MTG	1
3	PAFZZ	72582	5136692	UOC: CMP,CMQ,U73,U74 .PULLEY,GENERATOR	1
4	PFZZ	96906	MS35276-263	.SCREW,MACHINE BEARING RETAINER MTG	6
5	PFZZ	96906	MS35335-33	.WASHER,LOCK COMMUTATOR END MTG	18
6	PAFZZ	12204	1273447	.RETAINER BEARING DRIVE END HEAD	1
7	KFFZZ	19207	XA744L	.PACKING PART OF KIT P/N 5703308	1
8	PAFZZ	19207	7374859	.WASHER,FLAT	1
9	PAFZZ	34623	119276	.PACKAGE OIL SEAL	1
10	KFFZZ	19207	GHA37A	.SPACER PART OF KIT P/N 5703308	1
11	PFZZ	53335	XA744J	.PACKING,PREFORMED PART OF KIT P/N 5703308	1
12	PAFZZ	72582	5109949	.WASHER,SPECIAL	1
13	PFZZ	96906	MS24665-426	.PIN,COTTER PULLEY NUT UOC: CMP,CMQ,U73,U74	1
14	PFZZ	96906	MS16998-30	.SCREW,CAP,SOCKET HE DRIVE END MTG	6
15	PAFZZ	19207	10950810	.END BELL,ELECTRICAL	1
16	PAFZZ	19207	7374853	.ARMATURE,GENERATOR	1
17	PFZZ	96906	MS35756-8	.KEY,WOODRUFF	1
18	KFFZZ	19207	XA744K	.PACKING PART OF KIT P/N 5703308	1
19	KFFZZ	19207	GHA70	.PLUG PART OF KIT P/N 5703308	1
20	PAFZZ	68505	GHA39	.WASHER,SPRING TENSI	1
21	KFFZZ	19207	X3625	.BALL BEARING PART OF KIT P/N 5703308	1
22	XAFFF	19728	60-93	.FRAME AND FIELD ASY	1
23	PFZZ	96906	MS35276-264	..SCREW,MACHINE RECEPTACLE MTG	4
24	PFZZ	96906	MS35338-42	..WASHER,LOCK RECEPTACLE MTG	8
25	XDFZZ	68505	GHA1069S	..RECEPTACLE,GENERATO	1
26	PAFZZ	16764	1916211	..GASKET RECEPTACLE MTG	1
27	XBFZZ	16764	1941350	..SPACER,RECEPTACLE	1
28	PAFZZ	16764	1916150	..SHELL	1
29	PFZZ	96906	MS35206-243	..SCREW,MACHINE SHELL MTG	4
30	PAFZZ	19207	8332226	.SCREW,ASSEMBLED WAS BRUSH LEAD MTG	1
31	KFFZZ	19207	GHA20125	.BRUSH SET PART OF KIT P/N 5703308	1
32	PAFZZ	19728	GHA1004AS	.HOLDER ASSEMBLY,ELE	1
33	PFZZ	19207	7412437	.PACKING RING	1
34	PFZZ	32842	7374749	.END BELL,ELECTRICAL COMMUTER END	1
35	PFZZ	96906	MS16997-45	.SCREW,CAP,SOCKET HE COMMUTATOR END MTG	4
36	PFZZ	6906	MS16997-49	.SCREW,CAP,SOCKET HE COMMUTATOR END MTG	2
37	PAFZZ	06848	361637	.SCREW,MACHINE BRUSH PLATE MOUNTING	4
38	KFFZZ	19207	X3626	.BALL BEARING PART OF KIT P/N	1

(1) ITEM NO	(2) SMR CODE	(3) CAGEC	(4) PART NUMBER	(5) DESCRIPTION AND USABLE ON CODES (UOC)	(6) QTY
39	PFOZZ	96906	MS51065-42-2	5703308 BELTS,V,MATCHED SET	1
40	XDOZZ	72582	5121070	STRAP	1
41	PFOZZ	96905	MS45904-76	WASHER,LOCK STRAP AND BRACKET MOUNTING	5
42	PFOZZ	96906	MS18154-58	SCREW,CAP,HEXAGON H STRAP AND BRACKET MTG	5
43	PAOZZ	72582	5136712	BRACKET,GENERATOR MTG	1
44	PFOZZ	96906	MS35334-22	WASHER,LOCK GENERATOR TO BRACKET	2
45	PFOZZ	96906	MS90728-88	SCREW,CAP,HEXAGON H GENERATOR TO BRACKET	2

END OF FIGURE

